

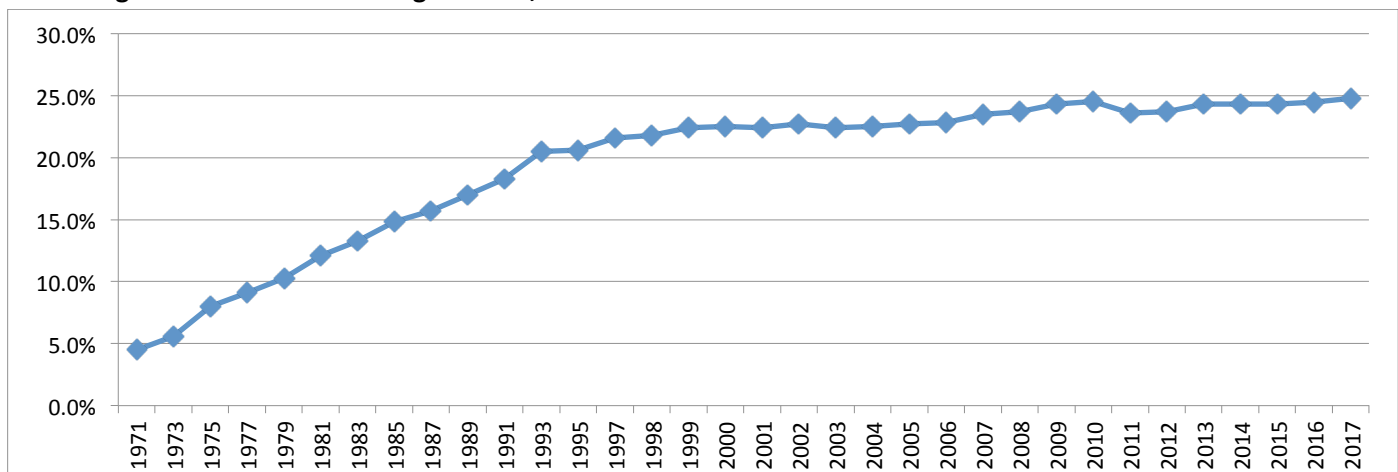
January 17, 2017

Women in State Legislatures 2017

Kelly Dittmar, Ph.D.

In 2017, 1832 women (1107D, 703R, 4I, 4Prg, 1WFP, 13NP) hold seats in state legislatures, comprising 24.8% of the 7383 members; 442 women (253D, 175R, 1I, 13NP) (22.4%) serve in state senates and 1390 women (854D, 528R, 3I, 4Prg, 1WFP) (25.7%) serve in state houses.¹ This is a net increase of 26 women state legislators nationwide, just barely marking a record high for the proportion of women among all state legislators in the United States, up from 24.5% at the end of 2016. However, while 27 more women are serving in state houses at the start of 2017 than served at the end of 2016, the number of women state senators dropped by one in 2017. Moreover, women remain less than one quarter of all state legislators in 2017, despite being over 50% of the population.

Percentage of Women in State Legislatures, 1971-2017

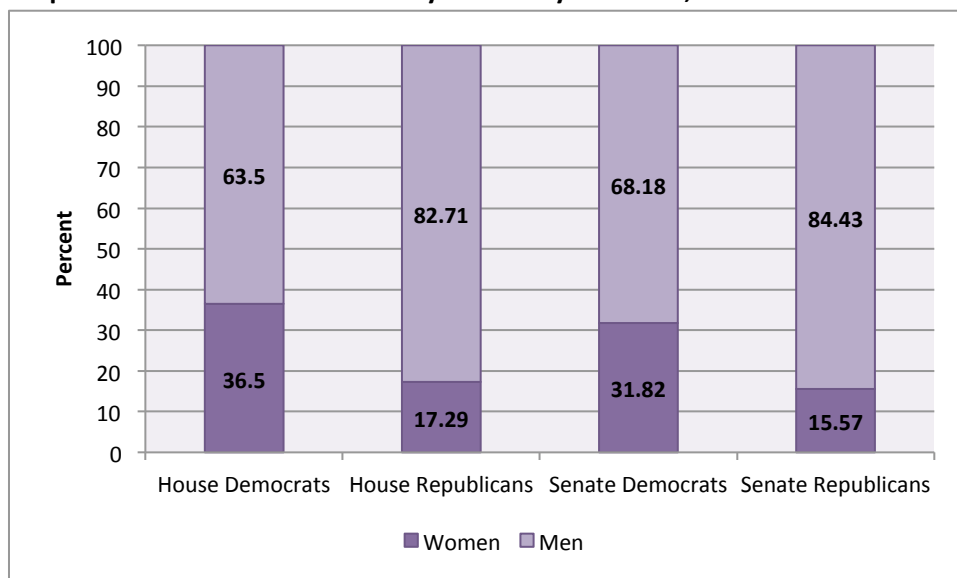


Source: Center for American Women and Politics, Rutgers University

Note: Data reflects the percentage of women in state legislatures at the end of each year except for 2017.

Partisan Differences in Women's State Legislative Representation

Proportion of Women in Each Party Caucus by Chamber, 2017



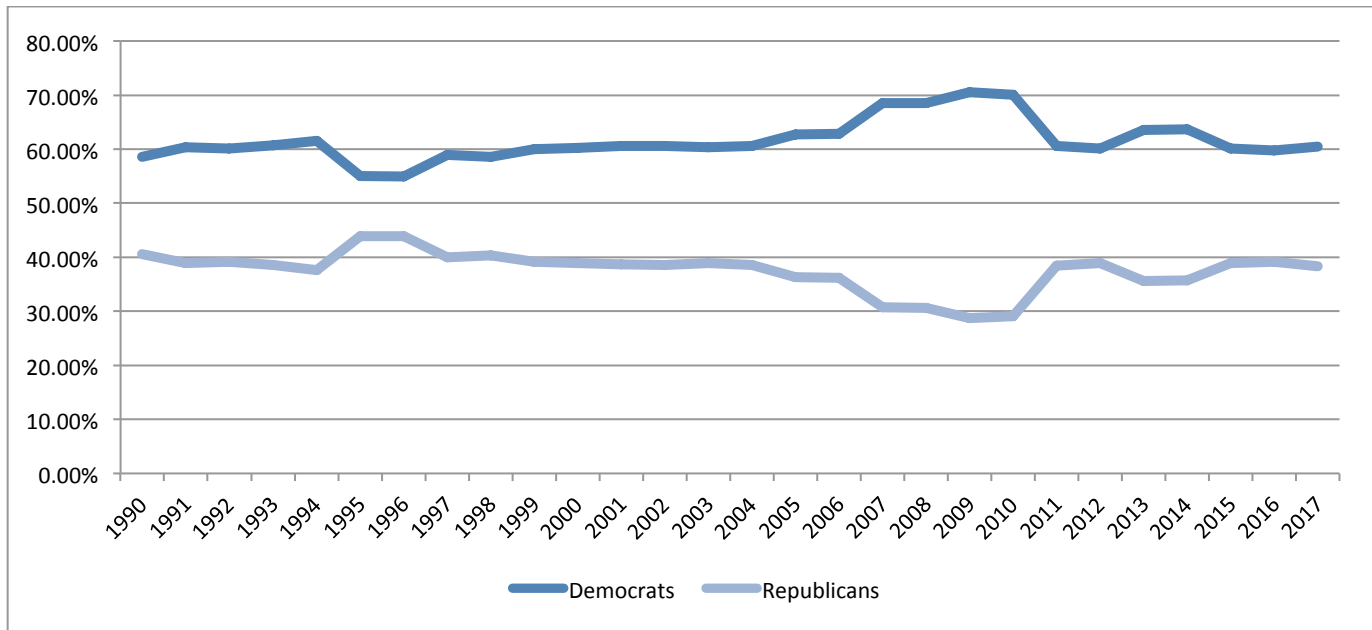
Women are just over one-third (35.3%) of all Democrats in state legislatures, while women are just 16.8% of all Republicans holding state legislative seats in 2017. The partisan disparity *among* women state legislators is not as stark in state legislatures as it is in Congress. Sixty percent of all women state legislators are Democrats, while 38% are Republicans. In 2010, the gap in partisanship among women state legislators was significantly wider; 70% of women legislators were Democrats and 30% were Republicans.

Source: Center for American Women and Politics, Rutgers University

¹ All data reflect numbers as of 1/13/17. For the latest updates, visit <http://www.cawp.rutgers.edu>.

These trends in partisanship do not vary significantly by chamber, though the partisan gap among women members is slightly larger among state representatives than among state senators in 2017.

Partisan Gap among Women State Legislators, 1990-2017



Source: Center for American Women and Politics, Rutgers University

Note: Data reflects the proportion of all women state legislators who are Democrats and Republicans in each year.

Women of Color in State Legislatures

Four hundred and thirty-three women of color (403D, 28R, 1Prg, 1WFP) serve in state legislatures in 2017.² They represent 5.9% of all state legislators, including 6% of all state representatives and 5.5% of all state senators. Women of color are 12.9% of all Democratic state legislators and 0.7% of all Republican state legislators.

Women of Color as a Proportion of All State Legislators, by Party and Chamber

	Democrats	Republicans	All Legislators
All Legislators	12.9%	0.7%	5.9%
Representatives	12.9%	0.7%	6.0%
Senators	12.6%	0.7%	5.5%

Source: Center for American Women and Politics, Rutgers University

Women of color represent 23.6% of all women state legislators, including 23.4% of all women state representatives and 24.4% of all women state senators. They are 36.4% of all Democratic women state legislators and 4.0% of all Republican state legislators in 2017.

Women of Color as a Proportion of All Women State Legislators, by Party and Chamber

	Democrats	Republicans	All Women
All Legislators	36.4%	4.0%	23.6%
Representatives	35.5%	3.8%	23.4%
Senators	39.5%	4.6%	24.4%

Source: Center for American Women and Politics, Rutgers University

Among the women of color serving in state legislative office in 2017, 264 (260D, 3R, 1WFP) identify primarily as Black, 111 (97D, 13R, 1Prg) identify primarily as Latina, 36 (28D, 8R) identify primarily as Asian/Pacific American, 13 (11D, 2R) women identify primarily as Native American and 9 (7D, 2R) identify primarily as multiracial.

² CAWP is waiting for race/ethnicity confirmation for 15 women state legislators as of 1/13/17. CAWP relies upon officeholders' self-identification to determine race/ethnicity.

Numbers of Women of Color State Legislators, by Race/Ethnicity and Party

	Democrats	Republicans	Progressives	Working Families Party	Total
Asian American/ Pacific Islander	28	8	0	0	36
Black	260	3	0	1	264
Latina	97	13	1	0	111
Native American	11	2	0	0	13
Multiracial	7	2	0	0	9

Source: Center for American Women and Politics, Rutgers University

There are no women of color serving in either chamber of the state legislature in four states: **Alaska, North Dakota, Nebraska, and South Dakota**. There are no women of color serving in state houses in four states: **Alaska, North Dakota, South Dakota, and Wyoming**.³ There are no women of color serving in state senates in eleven states: **Alaska, Iowa, Kentucky, Maine, Michigan, North Dakota, Nebraska, New Hampshire, Pennsylvania, South Dakota, and Vermont**. See the table below for a full listing of states' representation of women of color as a percentage of all legislators and of all women legislators.

Women's Legislative Representation by State

In 2017, Vermont ranks first in the nation for its percentage of women state legislators; 40% of Vermont state legislators are women. Nevada ranks second with 39.7%. Women's representation in the Nevada legislature jumped by eight percentage points (more than any other state) and six spots in national rankings from 2016 to 2017. Colorado, which ranked first in the nation

at the end of 2016, now ranks third at 39%, down from 42% in 2016. The proportion of women in the Arizona state legislature is just over three percentage points higher in 2017 than at the end of 2016, but the state's ranking dropped by one nationally to fourth. Illinois, the fifth-ranking state for women's state legislative representation in 2017, rose one spot from 2016 after seeing a 3.4 percentage point increase in women's representation.

Top 5 States for Women's State Legislative Representation

State	Percent Women
Vermont	40.0%
Nevada	39.7%
Colorado	39.0%
Arizona	38.9%
Illinois	36.2%

Bottom 5 States for Women's State Legislative Representation

State	Percent Women
Mississippi	13.8%
South Carolina	13.5%
West Virginia	13.4%
Oklahoma	12.8%
Wyoming	11.1%

The five states with the lowest representation of women in their state legislatures changed little between 2016 and 2017. Wyoming dropped one spot to the bottom of the list with a two percentage-point drop in women's state legislative representation, from 13.3% to 11.1%. Mississippi, which ranked 50th in 2016, now ranks 46th in the nation, with a slight rise in women's representation from 13.2% to 13.8%. Despite doubling the number of women in their state senate from two to four, South Carolina maintained a national ranking of 47th, with its percentage of women dropping slightly from 14.1% to 13.5%. Oklahoma fell from 47th to 49th in 2017, with women just 12.8% of state legislators this year. Finally,

while Alabama just barely escaped the bottom five in 2017, they swapped rankings with West Virginia, where women are now 13.4% of state legislators.

Among other states, Kansas saw the largest jump in its national ranking for women in its state legislature, from 29th in 2016 to 19th in 2017. Nebraska jumped ten spots from 32nd to 22nd. California dropped ten spots in national rankings between the end of 2016 and start of 2017, from 22nd to 32nd, with a 3.3 percentage point drop in women's state legislative representation. By percentage points, Delaware was the state with the largest decline in women's state legislative representation between 2016 and 2017, falling to just under 20% in 2017 from 24.2% in 2016.

³ Because Nebraska is a unicameral legislature, it is only listed among state senates with no women of color.

State	Senate					House									%Overall
	Rank	D	R	I*	Total Women	Total Senate	D	R	I*	Total Women	Total House	Total Women	Total Leg.		
AL	45	3	0	1	4	35	11	5		16	105	20	140	14.3%	
AK*	13	1	5		6	20	3	9		12	40	18	60	30.0%	
AZ	4	6	8		14	30	12	9		21	60	35	90	38.9%	
AR	40	3	4		7	35	3	15		18	100	25	135	18.5%	
CA	32	6	3		9	40	14	3		17	80	26	120	21.7%	
CO	3	9	2		11	35	19	9		28	65	39	100	39.0%	
CT	20	7	2		9	36	20	22		42	151	51	187	27.3%	
DE	34	2	1		3	21	7	2		9	41	12	62	19.4%	
FL	25	4	8		12	40	15	14		29	120	41	160	25.6%	
GA	24	9	1		10	56	31	20		51	180	61	236	25.8%	
HI	19	7	0		7	25	10	4		14	51	21	76	27.6%	
ID	12	4	5		9	35	7	16		23	70	32	105	30.5%	
IL	5	13	5		18	59	34	12		46	118	64	177	36.2%	
IN*	35	2	5		7	50	11	11		22	100	29	150	19.3%	
IA	31	5	1		6	50	18	9		27	100	33	150	22.0%	
KS	18	4	11		15	40	15	17		32	125	47	165	28.5%	
KY*	42	2	2		4	38	9	10		19	100	23	138	16.7%	
LA	44	3	2		5	39	8	9		17	105	22	144	15.3%	
ME	7	6	4		10	35	36	18		54	151	64	186	34.4%	
MD	10	10	2		12	47	36	11		47	141	59	188	31.4%	
MA	23	12	0		12	40	31	9		40	160	52	200	26.0%	
MI	29	1	3		4	38	15	15		30	110	34	148	23.0%	
MN	9	9	7		16	67	28	20		48	134	64	201	31.8%	
MS	46	4	5		9	52	10	5		15	122	24	174	13.8%	
MO	30	5	1		6	34	17	21		38	163	44	197	22.3%	
MT	17	12	2		14	50	21	8		29	100	43	150	28.7%	
NE	22	Nonpartisan			13	49					Unicameral		13	49	26.5%
NV	2	5	3		8	21	13	4		17	42	25	63	39.7%	
NH	16	4	3		7	24	77	38		115	400	122	424	28.8%	
NJ*	13	8	3		11	40	18	7		25	80	36	120	30.0%	
NM	15	5	2		7	42	17	9		26	70	33	112	29.5%	
NY	21	7	7		14	63	40	3	1	44	150	58	213	27.2%	
NC	26	6	7		13	50	15	13		28	120	41	170	24.1%	
ND	41	3	6		9	47	7	10		17	94	26	141	18.4%	
OH*	27	3	3		6	33	14	11		25	99	31	132	23.5%	
OK	49	2	4		6	48	5	8		13	101	19	149	12.8%	
OR	8	6	2		8	30	19	3		22	60	30	90	33.3%	
PA	39	3	4		7	50	19	21		40	203	47	253	18.6%	
RI	11	11	1		12	38	21	2		23	75	35	113	31.0%	
SC	47	2	2		4	46	10	9		19	124	23	170	13.5%	
SD	38	0	5		5	35	3	12		15	70	20	105	19.0%	
TN*	42	2	4		6	33	7	9		16	99	22	132	16.7%	
TX	33	2	6		8	31	21	8		29	150	37	181	20.4%	
UT	37	3	3		6	29	9	5		14	75	20	104	19.2%	
VT	1	9	2		11	30	41	13	7	61	150	72	180	40.0%	
VA*	35	7	3		10	40	13	4	0	17	100	27	140	19.3%	
WA	6	9	8		17	49	26	10		36	98	53	147	36.1%	
WV	48	0	3		3	34	2	13		15	100	18	134	13.4%	
WI*	27	6	3		9	33	13	9		22	99	31	132	23.5%	
WY	50	1	2		3	30	3	4		7	60	10	90	11.1%	
TOT.		253	175	1	442	1,972	854	528	8	1,390	5,411	1,832	7,383	24.8%	

*I = other parties; in the Senate, 1 Independent, 13 non-partisans; in the House, 1 Working Families Party, 4 Progressives, 3 Independents.

State	Change in Percent Women between 2016 and 2017	Change in Rank between 2016 and 2017	Percent Women in State Legislature, 2017	2017 Rank	Percent Women in State Legislature, 2016	2016 Rank
NV	+ 8.00	+6	39.7	2	31.7	8
KS	+ 4.90	+11	28.5	18	23.6	29
ME	+ 4.80	+6	34.4	7	29.6	13
NE	+ 4.10	+10	26.5	22	22.4	32
UT	+ 3.80	+6	19.2	37	15.4	43
RI	+ 3.60	+7	31.0	11	27.4	18
NM	+ 3.50	+4	29.5	15	26	19
IL	+ 3.40	+1	36.2	5	32.8	6
AZ	+ 3.30	-1	38.9	4	35.6	3
ID	+ 2.90	+5	30.5	12	27.6	17
MI	+ 2.70	+6	23.0	29	20.3	35
OR	+ 2.20	+2	33.3	8	31.1	10
WA	+ 2.10	-2	36.1	6	34	4
NY	+ 1.40	-1	27.2	21	25.8	20
GA	+ 1.20	+3	25.8	24	24.6	27
NC	+ 1.20	+4	24.1	26	22.9	30
MA	+ 1.00	-1	26.0	23	25	22
KY*	+ 0.80	0	16.7	42	15.9	42
FL	+ 0.60	-3	25.6	25	25	22
MS	+ 0.60	+4	13.8	46	13.2	50
TX	+ 0.50	+4	20.4	33	19.9	37
NH	+ 0.50	-1	28.8	16	28.3	15
AK*	0.00	-2	30.0	13	30	11
AL	0.00	+1	14.3	45	14.3	46
LA	0.00	0	15.3	44	15.3	44
NJ*	0.00	-2	30.0	13	30	11
PA	0.00	+1	18.6	39	18.6	40
TN*	0.00	-1	16.7	42	16.7	41
VA*	0.00	+3	19.3	35	19.3	38
CT	-0.50	-4	27.3	20	27.8	16
MD	-0.50	-3	31.4	10	31.9	7
SC	-0.60	0	13.5	47	14.1	47
IA	-0.70	0	22.0	31	22.7	31
ND	-0.70	-2	18.4	41	19.1	39
VT	-1.10	+1	40.0	1	41.1	2
HI	-1.30	-5	27.6	19	28.9	14
OK	-1.30	-2	12.8	49	14.1	47
IN*	-1.40	-1	19.3	35	20.7	34
MN	-1.50	-4	31.8	9	33.3	5
AR	-1.50	-4	18.5	40	20	36
OH*	-1.50	-5	23.5	27	25	22
WV	-1.50	-4	13.4	48	14.9	44
SD	-2.00	-5	19.0	38	21	33
WY	-2.20	-1	11.1	50	13.3	49
WI*	-2.30	-7	23.5	27	25.8	20
MO	-2.60	-4	22.3	30	24.9	26
MT	-2.60	-8	28.7	17	31.3	9
CO	-3.00	-2	39.0	3	42	1
CA	-3.30	-10	21.7	32	25	22
DE	-4.80	-6	19.4	34	24.2	28

State	Women of Color	All Women	All Legislators	Percent Women of Color (of all women)	Percent Women of Color (of all legislators)
AK	0	18	60	0.0%	0.0%
AL	12	20	140	60.0%	8.6%
AR	4	25	135	16.0%	3.0%
AZ	11	35	90	31.4%	12.2%
CA	15	26	120	57.7%	12.5%
CO	11	39	100	28.2%	11.0%
CT	6	51	187	11.8%	3.2%
DE	2	12	62	16.7%	3.2%
FL	15	41	160	36.6%	9.4%
GA	32	61	236	52.5%	13.6%
HI	16	21	76	76.2%	21.1%
IA	3	33	150	9.1%	2.0%
ID	4	32	105	12.5%	3.8%
IL	22	64	177	34.4%	12.4%
IN	5	29	150	17.2%	3.3%
KS	5	47	165	10.6%	3.0%
KY	1	23	138	4.3%	0.7%
LA	8	22	144	36.4%	5.6%
MA	5	52	200	9.6%	2.5%
MD	25	59	188	42.4%	13.3%
ME	1	64	186	1.6%	0.5%
MI	9	34	148	26.5%	6.1%
MN	6	64	201	9.4%	3.0%
MO	6	44	197	13.6%	3.0%
MS	13	24	174	54.2%	7.5%
MT	4	43	150	9.3%	2.7%
NC	13	41	170	31.7%	7.6%
ND	0	26	141	0.0%	0.0%
NE	0	13	49	0.0%	0.0%
NH	4	122	424	3.3%	0.9%
NJ	20	36	120	55.6%	16.7%
NM	18	33	112	54.5%	16.1%
NV	9	25	63	36.0%	14.3%
NY	26	58	213	44.8%	12.2%
OH	9	31	132	29.0%	6.8%
OK	4	19	149	21.1%	2.7%
OR	4	30	90	13.3%	4.4%
PA	10	47	253	21.3%	4.0%
RI	5	35	113	14.3%	4.4%
SC	7	23	170	30.4%	4.1%
SD	0	20	105	0.0%	0.0%
TN	8	22	132	36.4%	6.1%
TX	22	37	181	59.5%	12.2%
UT	6	20	104	30.0%	5.8%
VA	11	27	140	40.7%	7.9%
VT	2	72	180	2.8%	1.1%
WA	7	53	147	13.2%	4.8%
WI	4	31	132	12.9%	3.0%
WV	2	18	134	11.1%	1.5%
WY	1	10	90	10.0%	1.1%

For More Information

Find more information about the women in the 115th Congress and keep track of the latest numbers of women in elective office at all levels at <http://www.cawp.rutgers.edu>. There you can also find historical data on women candidates and officeholders.

Follow CAWP on Facebook ([facebook.com/womenandpolitics](https://www.facebook.com/womenandpolitics)) and Twitter ([@CAWP_RU](https://twitter.com/CAWP_RU)) for the latest news and data on women's political representation.